

April 2026

Hospital Markups of Biosimilars: When Lower-Cost Drugs Cost More

Remicade versus Inflectra

An Analysis of Hospital Drug Pricing in Michigan



Provided by Michigan Health Purchasers Coalition

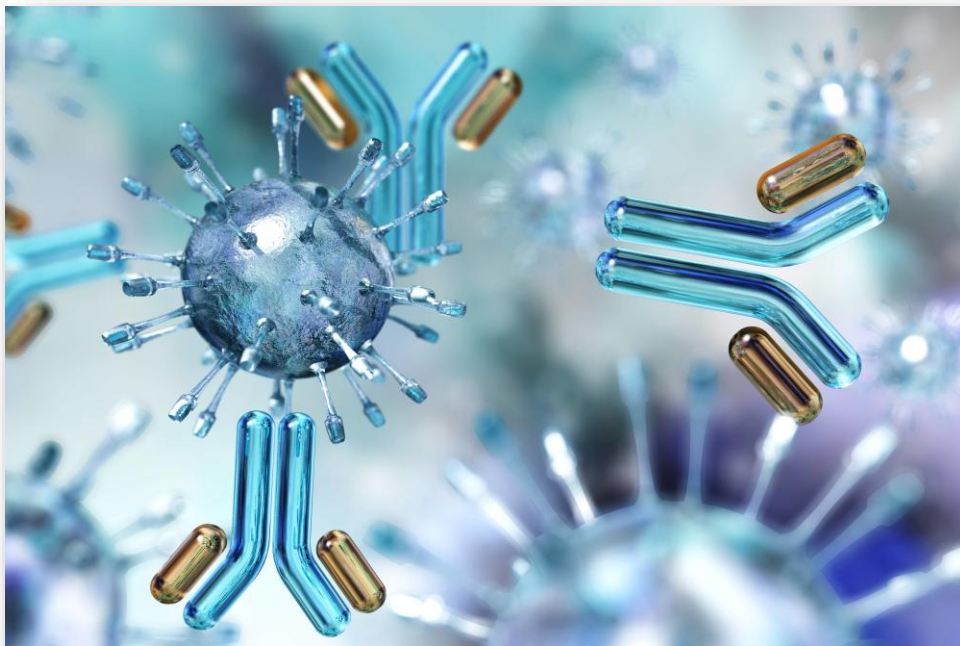
mihpc.org

Understanding Remicade and Biosimilars

Remicade (infliximab) is a biologic drug used to treat serious inflammatory conditions including rheumatoid arthritis, Crohn's disease, ulcerative colitis, and psoriatic arthritis. It is administered intravenously, typically in a hospital or infusion center setting, and represents one of the most prescribed, most expensive specialty medications in the United States.

Inflectra is a biosimilar to Remicade. Biosimilars are highly similar versions of approved biologic drugs with no clinically meaningful differences in safety, purity, or potency. The U.S. Food and Drug Administration (FDA) approved Inflectra in 2016 specifically to provide a lower-cost alternative to Remicade. The entire premise of biosimilar development and approval is to introduce market competition and bring drug costs down for patients, employers, and the healthcare system.

Medicare's reference price, the government's benchmark for what these drugs cost when administered to patients, reflect how biosimilars save dollars. Medicare reimburses Inflectra at **\$24.22 per unit** and Remicade at **\$32.42 per unit** with a typical patient taking three initial doses within the first 6 weeks, and then maintenance doses every 4-8 weeks. The expense for this treatment adds up over the course of a year.

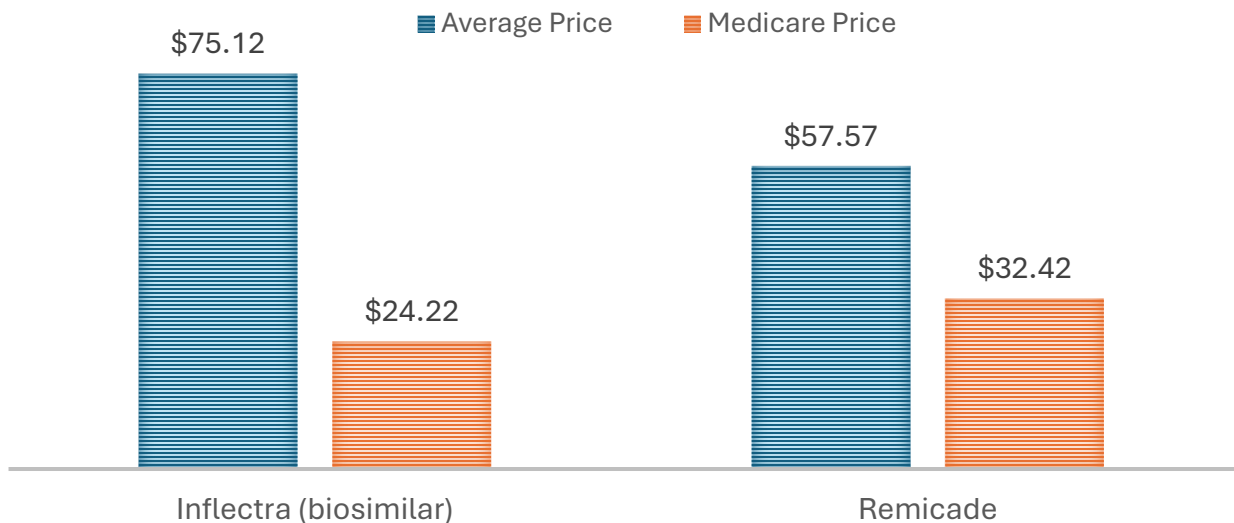


Michigan Hospitals Inflate Both Drugs Above Medicare Reference Prices

The Medicare reference price represents a standardized benchmark for drug reimbursement. It is the amount the federal government pays when these medications are administered to Medicare patients and serves as a useful reference point for evaluating whether commercial prices are proportionate to cost. The Medicare payment is based on the average sales price, plus a 6% to allow for a small margin.

Across 122 acute care hospitals in Michigan with data for both Remicade and Inflectra, **94 hospitals (77%)** priced both drugs above the Medicare reference price. The markups were substantial. On average, Michigan hospitals charged **219% above Medicare's reference price for Inflectra** and **116% above Medicare's reference price for Remicade**. In dollar terms, the median average for hospital charges for Inflectra was \$75.12 and \$57.57 for Remicade, compared to Medicare benchmarks of \$24.22 and \$32.42. At the extreme end, some hospitals charged more than 600% above Medicare benchmarks for Inflectra. For example, an urban hospital on the west side of the state, priced Inflectra at \$193.38 - a 698% markup, and a rural hospital in the state's Thumb Region priced Remicade at \$198.94 - a 514% markup.

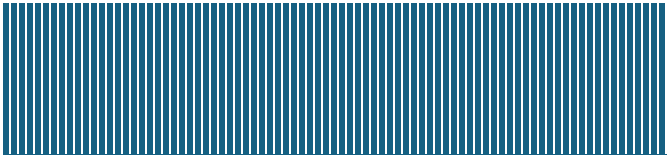
AVERAGE HOSPITAL PRICE VS MEDICARE REFERENCE PRICE
Michigan Hospitals



For employers who provide employee health insurance coverage, the markups translate directly into higher claims costs and ultimately higher premiums for both employers and employees. Specialty drug infusions like Remicade and Inflectra were among the highest-cost line items in commercial health plans. When hospital prices for these drugs run two to seven times the Medicare reference price, that cost is ultimately passed along to Michigan employers and their workers.

Hospitals Routinely Price the Biosimilar Higher Than the Brand Drug

The purpose of the biosimilar FDA approval was to introduce price competition. A biosimilar that costs more than its reference brand drug cannot fulfill that purpose and eliminates the economic incentive for payers, prescribers, or patients who choose it. Yet across Michigan hospitals, this was precisely what the data showed.



Biosimilars cost less than its brand biologic, yet 89 of 122 hospitals in Michigan priced Inflectra (biosimilar) higher than Remicade for commercial plans.

In Michigan, 89 of 122 hospitals (73%), priced Inflectra (biosimilar) higher than Remicade. The pattern, the biosimilar costing more than the brand drug it was designed to replace, is called upside-down pricing. The market signal that biosimilars were supposed to be the lower-cost equivalent was absent or reversed at nearly three out of four hospitals in Michigan.

The upside-down pricing pattern extended to a particularly striking subset of cases with 26 hospitals charged Remicade at or below the Medicare reference price while simultaneously pricing Inflectra above Medicare's reference price. In other words, at these hospitals, the brand-name biologic costs less than or equal to the government benchmark, but the lower-cost biosimilar costs more. This pricing arrangement directly eliminated any financial benefit to patients or payers who might otherwise choose the FDA-approved lower-cost alternative.

For employers and patients, the impact is clear. When a physician prescribed Inflectra expecting the patient to receive a cost benefit relative to Remicade, that benefit did not materialize at most Michigan hospitals. Michigan hospitals marked-up Inflectra an average of 219% above Medicare's reference price, compared to 116% for Remicade. The drug designed to reduce costs was marked-up at nearly twice the rate of the brand drug it was designed to replace.

The 340B Program Correlates with Upside-Down Pricing

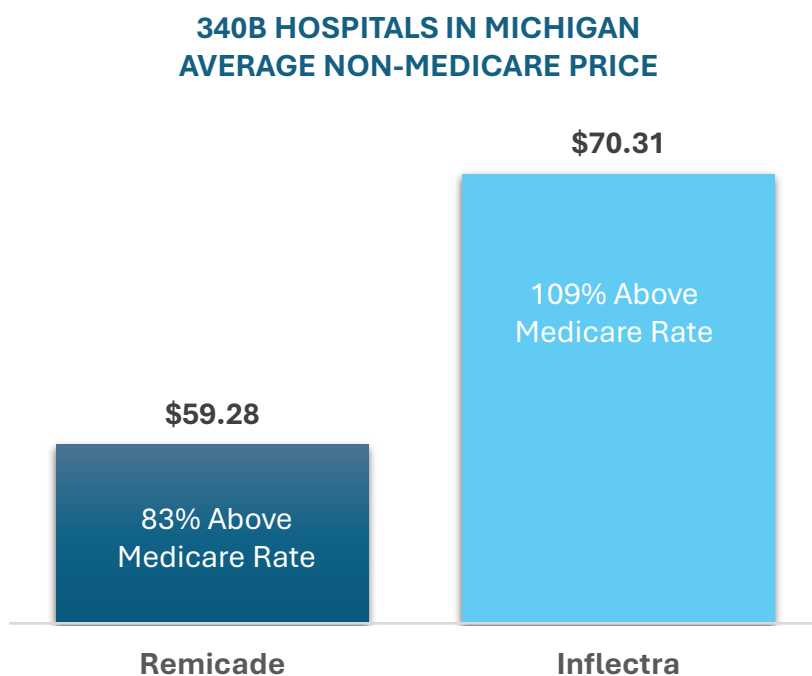
The most significant finding in the data concerns the relationship between 340B hospital status and the upside-down pricing pattern.

The 340B Drug Pricing Program was created to allow “safety net” hospitals to purchase steeply discounted medications from pharmaceutical companies to provide care for low-income, uninsured, and underinsured patients. However, hospitals are not required to pass these discounts on to needy patients nor are they required to disclose how much they profit from 340B discounts or how they use those profits. This has led to a situation in which large, tax-exempt hospitals are able to leverage 340B as a profit driver by marking up discounted medications and pocketing the difference. Because of this “buy low, sell high” model, 340B materially increases employer-sponsored premiums, and increases overall healthcare system costs across the country.

In Michigan, of the 122 acute care hospitals in this analysis, **57 (47%) are designated 340B hospitals**. The pricing patterns between 340B and non-340B hospitals revealed a meaningful difference in both the prevalence and direction of upside-down pricing.

At 340B hospitals, 81% showed upside-down pricing with Inflectra being priced higher than Remicade. 340B hospitals priced Remicade at an average of \$59.28 and Inflectra at an average of \$70.31, reflecting an average Remicade markup of 83% above Medicare and an average Inflectra markup of 190% above Medicare. The pattern was consistent with a dynamic where 340B hospitals, having acquired both drugs at discounted acquisition costs, priced Remicade conservatively for commercial payers while pricing Inflectra at significantly higher rates.

Because 340B hospitals acquired drugs at deep discounts without any obligation to pass those savings through, the program created financial incentives that work against biosimilar adoption, particularly for high-cost specialty drugs where the 340B spread is greatest. Other factors, including health system contracting practices, payer mix, and drug rebate structures, may have contributed to these pricing patterns and warrants further examination.



Conclusions

The data examined in this report covers hospital pricing for Remicade (infliximab) and Inflectra (infliximab-dyyb) at 122 acute care hospitals in Michigan. The findings raised substantive questions about the relationship between hospital drug pricing, biosimilar market function, and the structural incentives created by the 340B Drug Pricing Program.


The majority of Michigan hospitals priced both Remicade and Inflectra well above Medicare reference prices. The average markup for Inflectra, a drug explicitly approved to provide a lower-cost alternative to Remicade, was approximately twice the average markup applied to Remicade itself. This means the drug designed to lower costs is, in practice, generating higher revenue margins for hospitals than the brand drug it was meant to displace.

In Michigan, nearly three out of four acute care hospitals priced Inflectra higher than Remicade. The upside-down pricing directly nullifies the cost-saving purpose of biosimilar FDA approval. Employers and patients who expect to benefit from a physician prescribing the biosimilar alternative instead faced equal or greater out-of-pocket costs. At 26 hospitals, Remicade was priced at or below Medicare's benchmark while Inflectra was priced above it. Since the FDA had determined no clinically meaningful differences exist between the two drugs and patient experience over the last 10 years showing Inflectra to be just as beneficial as Remicade, the higher priced biosimilar cannot be explained by a clinical need.

340B hospitals demonstrated a high rate of upside-down pricing and a wider average price gap between Inflectra driven primarily by 340B hospitals pricing Remicade at substantially lower markups while keeping Inflectra prices elevated. Because 340B hospitals acquired drugs at deeply discounted prices without an obligation to pass those savings on to commercial payers or patients, the program may have created financial incentives that work against biosimilar adoption, particularly for high-cost specialty drugs where the 340B spread was greatest.

For Michigan employers, who collectively fund healthcare for more than half of the state's population through commercial insurance, the alarming pricing patterns represent a direct cost. Specialty drug infusions are among the most significant drivers of commercial health plan expenditures. When hospital prices for these drugs consistently and substantially exceed what Medicare pays, and when the lower-cost biosimilar alternative routinely costs more than the brand drug, employers have limited ability to implement biosimilars adoption to save dollars.

The findings underscore the value of hospital price transparency as a tool for understanding and evaluating drug pricing practices. The patterns documented were visible only because price transparency requirements have made hospital-level pricing data available for analysis. Continued access to pricing data and continued analysis of what it reveals remains essential for employers, patients, and policymakers seeking to understand how healthcare dollars are spent.



April 2026

Hospital Markups of Biosimilars: When Lower-Cost Drugs Cost More

Remicade versus Inflectra

An Analysis of Hospital Drug Pricing in Michigan

APPENDIX



Average Price by Hospital

Michigan

Remicade and Inflectra; non-Medicare average price

Hospital	340B Hospital	Rate Source	Inflectra (Biosimilar)	Remicade (Biologic)	% Difference Inflectra vs Remicade	Difference Inflectra vs Medicare	Difference Remicade vs Medicare
Medicare Reference Price			\$24.22	\$32.42	-25.3%		
Ascension Borgess Allegan Hospital	No	Payer	\$67.70	\$57.56	17.6%	179.5%	77.5%
Ascension Borgess Hospital	Yes	Payer	\$45.42	\$31.76	43.0%	87.5%	-2.0%
Ascension Borgess-Lee Hospital	Yes	Payer	\$66.70	\$72.65	-8.2%	175.4%	124.1%
Aspirus Iron River Hospital	No	Payer	\$68.23	\$74.31	-8.2%	181.7%	129.2%
Aspirus Ironwood Hospital	No	Payer	\$67.72	\$57.58	17.6%	179.6%	77.6%
Aspirus Keweenaw Hospital	Yes	Payer	\$67.76	\$57.61	17.6%	179.8%	77.7%
Baraga County Memorial Hospital	No	Hospital	\$62.83	\$97.99	-35.9%	159.4%	202.3%
Bronson Battle Creek Hospital	Yes	Payer	\$162.79	\$113.68	43.2%	572.1%	250.6%
Bronson LakeView Hospital	Yes	Payer	\$58.52	\$63.74	-8.2%	141.6%	96.6%
Bronson Methodist Hospital	No	Both	\$193.38	\$86.88	122.6%	698.4%	168.0%
Bronson South Haven Hospital	No	Both	\$62.08	\$67.61	-8.2%	156.3%	108.5%
Trinity Chelsea Hospital	No	Both	\$45.42	\$98.12	-53.7%	87.5%	202.7%
Childrens Hospital of Michigan	Yes	Hospital	\$45.42	\$33.52	35.5%	87.5%	3.4%
Corewell Health Beaumont Grosse Pointe Hospital	Yes	Payer	\$60.59	\$42.37	43.0%	150.2%	30.7%
Corewell Health Beaumont Troy Hospital	Yes	Payer	\$128.17	\$89.62	43.0%	429.2%	176.4%
Corewell Health Big Rapids Hospital	No	Payer	\$65.59	\$55.76	17.6%	170.8%	72.0%
Corewell Health Butterworth Hospital	No	Payer	\$50.10	\$132.77	-62.3%	106.9%	309.5%
Corewell Health Dearborn Hospital	No	Payer	\$89.32	\$62.46	43.0%	268.8%	92.7%
Corewell Health Farmington Hills Hospital	Yes	Payer	\$105.11	\$73.50	43.0%	334.0%	126.7%
Corewell Health Gerber Hospital	Yes	Payer	\$61.80	\$52.54	17.6%	155.2%	62.1%
Corewell Health Grand Rapids Blodgett Hospital	No	Payer	N/A	N/A	N/A	N/A	N/A
Corewell Health Greenville Hospital	No	Payer	\$58.97	\$64.23	-8.2%	143.5%	98.1%
Corewell Health Helen DeVos Childrens Hospital	No	Payer	N/A	N/A	N/A	N/A	N/A
Corewell Health Lakeland Hospitals - St Joseph Hospital	Yes	Payer	\$45.42	N/A	N/A	N/A	N/A
Corewell Health Ludington Hospital	No	Payer	\$63.67	\$69.35	-8.2%	162.9%	113.9%
Corewell Health Pennock Hospital	Yes	Payer	\$170.97	\$145.35	17.6%	605.9%	348.3%
Corewell Health Reed City Hospital	No	Payer	\$132.90	\$168.92	-21.3%	448.7%	421.0%
Corewell Health Taylor Hospital	No	Payer	\$159.54	\$103.33	54.4%	558.7%	218.7%
Corewell Health Trenton Hospital	Yes	Payer	\$115.85	\$81.01	43.0%	378.3%	149.9%
Corewell Health Watervliet Hospital	Yes	Payer	\$45.42	\$31.76	43.0%	87.5%	-2.0%
Corewell Health Wayne Hospital	Yes	Payer	\$76.70	\$57.54	33.3%	216.7%	77.5%
Corewell Health William Beaumont University Hospital	No	Payer	\$57.21	\$52.65	8.7%	136.2%	62.4%
Corewell Health Zeeland Hospital	Yes	Payer	\$59.91	\$65.25	-8.2%	147.4%	101.3%
Covenant Medical Center - Harrison	No	Payer	\$78.22	\$54.69	43.0%	223.0%	68.7%
DMC Detroit Receiving Hospital	Yes	Hospital	\$45.42	\$33.52	35.5%	87.5%	3.4%
DMC Harper University Hospital	No	Hospital	\$45.42	\$33.52	35.5%	87.5%	3.4%
DMC Huron Valley-Sinai Hospital	No	Hospital	\$45.42	\$33.52	35.5%	87.5%	3.4%
DMC Sinai-Grace Hospital	Yes	Both	\$45.42	\$38.60	17.7%	87.5%	19.1%
Deckerville Community Hospital	Yes	Payer	\$55.20	\$46.93	17.6%	127.9%	44.8%
Dickinson Hospital - Iron Mountain	No	Both	\$69.26	\$57.52	20.4%	186.0%	77.4%
Eaton Rapids Medical Center	No	Hospital	\$46.55	\$39.57	17.6%	92.2%	22.1%
Garden City Hospital	No	Payer	\$160.80	\$111.89	43.7%	563.9%	245.1%
Harbor Beach Community Hospital	Yes	Both	\$66.52	\$87.03	-23.6%	174.6%	168.4%

Average Price by Hospital

Michigan

Remicade and Inflectra; non-Medicare average price

Hospital	340B Hospital	Rate Source	Inflectra (Biosimilar)	Remicade (Biologic)	% Difference Inflectra vs Remicade	Difference Inflectra vs Medicare	Difference Remicade vs Medicare
Medicare Reference Price			\$24.22	\$32.42	-25.3%		
Helen Newberry Joy Hospital	No	Both	\$45.42	\$90.69	-49.9%	87.5%	179.7%
Henry Ford Genesys Hospital	No	Payer	\$168.12	\$117.56	43.0%	594.1%	262.6%
Henry Ford Hospital	Yes	Both	\$125.35	\$91.10	37.6%	417.5%	181.0%
Henry Ford Jackson Hospital	No	Hospital	\$125.13	\$91.42	36.9%	416.6%	182.0%
Henry Ford Macomb Hospital - Clinton Township	No	Hospital	\$90.87	\$66.66	36.3%	275.2%	105.6%
Henry Ford Madison Heights Hospital	Yes	Payer	\$187.87	\$131.37	43.0%	675.7%	305.2%
Henry Ford Providence Novi Hospital	No	Payer	\$45.42	\$31.76	43.0%	87.5%	-2.0%
Henry Ford Providence Southfield	No	Payer	\$68.49	\$124.11	-44.8%	182.8%	282.8%
Henry Ford River District Hospital	No	Payer	N/A	\$222.86	N/A	N/A	587.4%
Henry Ford Rochester Hospital	No	Payer	\$102.98	\$72.01	43.0%	325.2%	122.1%
Henry Ford St John Hospital	No	Payer	\$45.42	\$31.76	43.0%	87.5%	-2.0%
Henry Ford Warren Hospital	No	Payer	\$187.80	\$131.32	43.0%	675.4%	305.1%
Henry Ford West Bloomfield Hospital	No	Hospital	\$90.65	\$66.74	35.8%	274.3%	105.9%
Henry Ford Wyandotte Hospital	Yes	Hospital	\$21.79	\$66.74	-67.4%	-10.0%	105.9%
Hills & Dales Healthcare	Yes	Payer	\$109.63	\$93.21	17.6%	352.6%	187.5%
Hillsdale Community Health Center	Yes	Payer	\$70.80	\$77.11	-8.2%	192.3%	137.8%
Holland Hospital	No	Both	\$19.26	\$134.43	-85.7%	-20.5%	314.7%
Hurley Medical Center	Yes	Both	\$126.12	\$88.19	43.0%	420.7%	172.0%
Insight Hospital & Medical Center Coldwater	Yes	Payer	\$97.23	\$67.99	43.0%	301.4%	109.7%
Kalkaska Memorial Health Center	No	Hospital	\$41.31	\$30.52	35.4%	70.6%	-5.9%
Karmanos Cancer Center	Yes	Payer	\$45.42	\$97.64	-53.5%	87.5%	201.2%
Lake Huron Medical Center	No	Both	\$159.79	\$111.73	43.0%	559.7%	244.6%
Mackinac Straits Health System	Yes	Payer	\$45.42	\$31.76	43.0%	87.5%	-2.0%
Marlette Regional Hospital	No	Payer	\$122.90	\$104.49	17.6%	407.4%	222.3%
McKenzie Hospital Campus	No	Both	\$122.57	\$101.87	20.3%	406.1%	214.2%
McLaren Bay Region	Yes	Payer	\$62.79	\$43.91	43.0%	159.2%	35.4%
McLaren Bay Special Care	Yes	Hospital	\$62.79	\$43.78	43.4%	159.2%	35.0%
McLaren Caro Region	No	Payer	\$182.66	\$198.94	-8.2%	654.2%	513.6%
McLaren Central Michigan	No	Hospital	\$53.70	\$49.63	8.2%	121.7%	53.1%
McLaren Flint	No	Both	\$45.42	\$101.73	-55.4%	87.5%	213.8%
McLaren Greater Lansing	No	Both	\$77.27	\$55.81	38.5%	219.0%	72.1%
McLaren Lapeer Region	No	Both	\$142.76	\$99.83	43.0%	489.4%	207.9%
McLaren Macomb	Yes	Payer	\$87.91	\$61.47	43.0%	263.0%	89.6%
McLaren Northern Michigan	No	Both	\$71.17	\$49.63	43.4%	193.8%	53.1%
McLaren Oakland	No	Payer	\$79.24	\$55.41	43.0%	227.2%	70.9%
McLaren Port Huron	No	Payer	\$87.92	\$61.48	43.0%	263.0%	89.6%
McLaren Thumb Region	No	Payer	\$177.37	\$193.18	-8.2%	632.3%	495.9%
Memorial Healthcare	Yes	Payer	\$45.42	\$31.76	43.0%	87.5%	-2.0%
Munising Memorial Hospital	No	Payer	\$104.20	\$88.59	17.6%	330.2%	173.3%
Munson Healthcare Cadillac Hospital	Yes	Both	\$45.42	\$31.76	43.0%	87.5%	-2.0%
Munson Healthcare Charlevoix Hospital	No	Hospital	\$45.42	\$31.76	43.0%	87.5%	-2.0%
Munson Healthcare Grayling Hospital	Yes	Hospital	\$45.42	\$31.06	46.2%	87.5%	-4.2%
Munson Healthcare Manistee Hospital	Yes	Hospital	\$45.42	\$31.06	46.2%	87.5%	-4.2%

Average Price by Hospital

Michigan

Remicade and Inflectra; non-Medicare average price

Hospital	340B Hospital	Rate Source	Inflectra (Biosimilar)	Remicade (Biologic)	% Difference Inflectra vs Remicade	Difference Inflectra vs Medicare	Difference Remicade vs Medicare
Medicare Reference Price			\$24.22	\$32.42	-25.3%		
Munson Healthcare Otsego Memorial Hospital	Yes	Hospital	\$41.31	\$30.52	35.4%	70.6%	-5.9%
Munson Healthcare Paul Oliver Memorial Hospital	Yes	Hospital	\$45.42	\$31.76	43.0%	87.5%	-2.0%
Munson Medical Center	No	Hospital	\$45.42	\$31.09	46.1%	87.5%	-4.1%
MyMichigan Medical Center Alma	Yes	Both	\$112.39	\$78.59	43.0%	364.0%	142.4%
MyMichigan Medical Center Alpena	No	Both	\$33.75	\$84.70	-60.2%	39.3%	161.3%
MyMichigan Medical Center Clare	No	Both	\$64.21	\$100.30	-36.0%	165.1%	209.4%
MyMichigan Medical Center Gladwin	Yes	Both	\$49.86	\$113.88	-56.2%	105.9%	251.3%
MyMichigan Medical Center Midland	Yes	Both	\$161.33	\$79.47	103.0%	566.1%	145.1%
MyMichigan Medical Center Saginaw	No	Both	\$28.03	\$108.51	-74.2%	15.7%	234.7%
MyMichigan Medical Center Sault	No	Both	\$67.60	\$57.47	17.6%	179.1%	77.3%
MyMichigan Medical Center Standish	No	Both	\$57.04	\$62.13	-8.2%	135.5%	91.6%
MyMichigan Medical Center Tawas	Yes	Both	\$53.25	\$45.27	17.6%	119.9%	39.6%
MyMichigan Medical Center West Branch	Yes	Both	\$61.08	\$51.93	17.6%	152.2%	60.2%
OSF St Francis Hospital & Medical Group	No	Both	\$51.98	\$43.56	19.3%	114.6%	34.4%
Oaklawn Hospital	Yes	Payer	\$66.16	\$56.25	17.6%	173.2%	73.5%
Pontiac General Hospital	No	Payer	N/A	\$168.00	N/A	N/A	418.2%
ProMedica Charles and Virginia Hickman Hospital	No	Payer	\$127.42	\$89.10	43.0%	426.1%	174.8%
ProMedica Monroe Regional Hospital	Yes	Payer	\$116.37	\$81.37	43.0%	380.5%	151.0%
Scheurer Hospital	No	Payer	\$183.12	\$155.69	17.6%	656.1%	380.2%
Schoolcraft Memorial Hospital	Yes	Payer	\$45.42	\$31.76	43.0%	87.5%	-2.0%
Sheridan Community Hospital	No	Payer	\$182.35	\$198.60	-8.2%	652.9%	512.6%
Three Rivers Health Hospital	Yes	Payer	\$67.82	\$57.66	17.6%	180.0%	77.9%
Trinity Health Ann Arbor Hospital	Yes	Both	\$45.42	\$31.31	45.1%	87.5%	-3.4%
Trinity Health Grand Haven	No	Payer	\$45.42	\$31.76	43.0%	87.5%	-2.0%
Trinity Health Grand Rapids Hospital	Yes	Both	\$45.42	\$31.31	45.1%	87.5%	-3.4%
Trinity Health Livingston Hospital	No	Both	\$45.42	\$31.31	45.1%	87.5%	-3.4%
Trinity Health Livonia Hospital	No	Both	\$45.42	\$31.31	45.1%	87.5%	-3.4%
Trinity Health Muskegon	Yes	Both	\$45.42	\$31.31	45.1%	87.5%	-3.4%
Trinity Health Oakland Hospital	Yes	Both	\$45.42	\$31.31	45.1%	87.5%	-3.4%
Trinity Health Shelby Hospital	Yes	Both	\$45.42	\$31.31	45.1%	87.5%	-3.4%
UM Health - Sparrow Carson	Yes	Both	\$45.42	\$69.46	-34.6%	87.5%	114.3%
UM Health - Sparrow Clinton	No	Both	\$45.42	\$44.98	1.0%	87.5%	38.7%
UM Health - Sparrow Eaton	No	Hospital	\$45.42	\$68.31	-33.5%	87.5%	110.7%
UM Health - Sparrow Ionia	No	Both	\$45.42	\$46.76	-2.9%	87.5%	44.2%
UM Health - Sparrow Lansing	Yes	Hospital	\$45.42	\$32.27	40.7%	87.5%	-0.5%
UP Health System - Bell	Yes	Payer	\$46.02	\$39.13	17.6%	90.0%	20.7%
UP Health System - Marquette	Yes	Both	\$24.23	\$97.60	-75.2%	0.0%	201.0%
UP Health System - Portage Main Campus	No	Both	\$69.16	\$83.71	-17.4%	185.5%	158.2%
University of Michigan Ann Arbor	No	Payer	\$45.42	\$31.76	43.0%	87.5%	-2.0%
University of Michigan Health - West	Yes	Both	\$45.42	\$55.67	-18.4%	87.5%	71.7%

Sources

Cost data acquired from Turquoise Health, a price transparency platform that pulls healthcare provider rates and procedure data. <https://turquoise.health/>.

CMS Healthcare Common Procedure Coding System (HCPCS) billing code for Remicade (infliximab) J1745 and for Inflectra (infliximab-dyyb) is Q5103.

Prices based on CMS Average Sale Price (ASP); 1 vial = 100mg or 10 units.



About MIHPC

Michigan Health Purchasers Coalition (MIHPC) is a 501(c)(4) established to mobilize employers, families and other healthcare stakeholders across the state to rein in the excessive prices paid for employer-sponsored healthcare for over half of all Michiganders.

MHPC initiatives include increasing hospital price transparency, prohibiting anti-competitive contracts and billing, increasing oversight on consolidations and mergers, and incorporating fair pricing among all payers of healthcare.

To view detailed hospital price details in Michigan, go to www.mihpc.org and click on the Hospital Price Transparency Dashboard.



www.mihpc.org